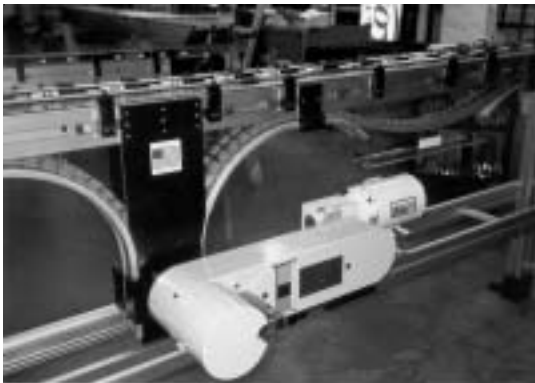


DRIVE AND IDLER SYSTEMS

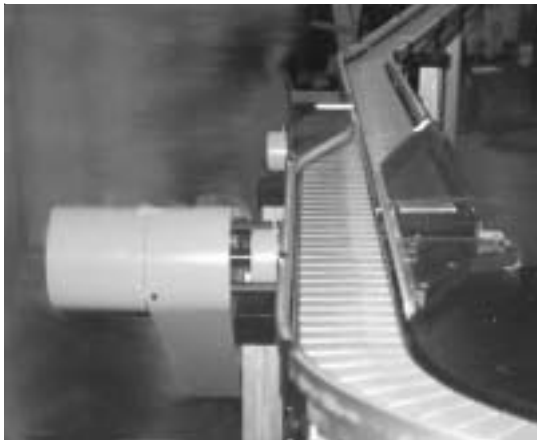
Mod Tech provides components for mounting sprockets shafts, adjustment devices for reducers mounting plates, and chain guides for several styles of drive as shown below. These components were engineered to be as flexible as possible. Due to the differences in flat top chain types and sizes, some of the components are chain specific. Please review each section to determine the correct components required for your application and the drive style required.



END DRIVE CONVEYORS- The conveyor chain begins and ends at different locations with a drive at one end and an idler at the other. The chain return is under the working surface of the chain.

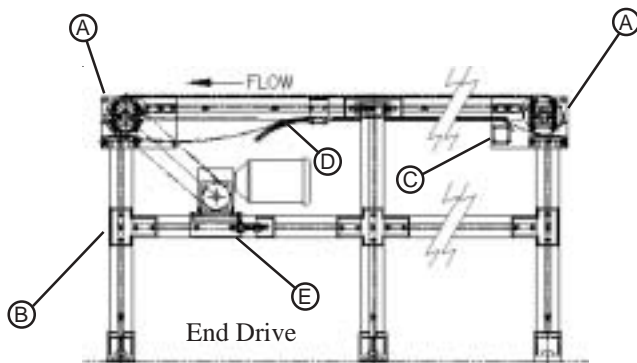
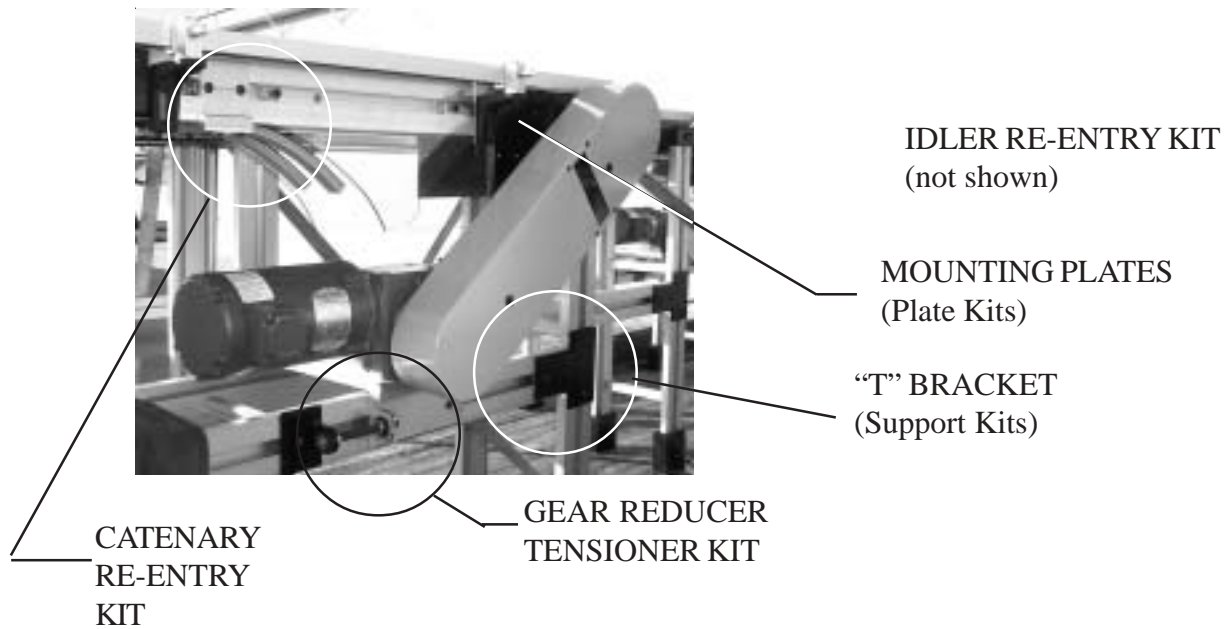


CENTER DRIVE CONVEYORS - For carousel solutions, the conveyor chain forms a loop with no return level required with a small section of the loop dedicated to the drive unit. No idlers are required.



WRAP DRIVE CONVEYORS -The conveyor chain forms a loop with a return level below the working surface. The beginning and end of the working surface are sitting side by side with some overlap in the working surface. Guides are used to transfer product from the end of the conveyor to the beginning forming a continuous loop of working surface.

END DRIVE KIT DESCRIPTIONS



A - MAC-4010/4013 DRIVE & IDLER PLATE KITS - Includes components designed to mount drive shaft bearings to the conveyor and plates to rails.

B - MAC-4370/4371 SUPPORT KITS - Includes structural components for mounting the legs and stringers around the drive and idler components.

C - MAC-44__ IDLER RE-ENTRY KIT - Includes the components to guide the chain back into the conveyor rails after rounding the idler sprocket.

D- MAC-42__ CATENARY RE-ENTRY KIT - Includes the components that guide the chain back into the conveyor rail after the chain rounds the drive sprocket.

E - MAC-4210 GEAR REDUCER TENSIONER KIT - Includes components to tension the drive chain via adjusting the drive plate (not included).

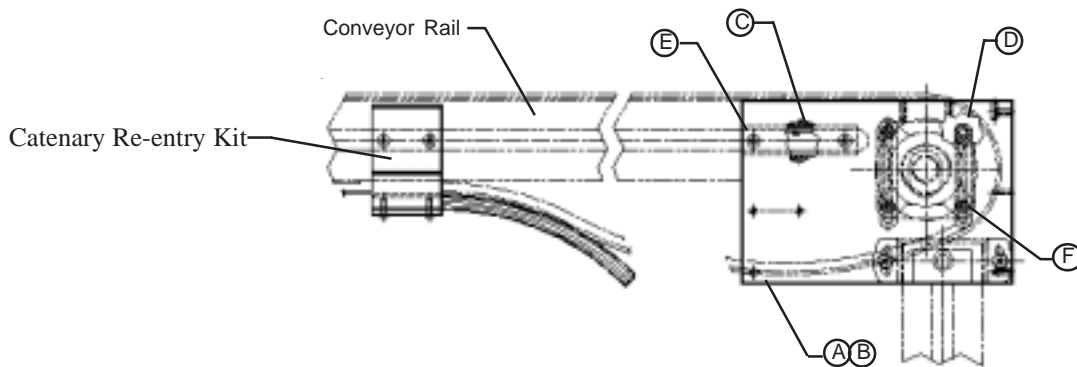
NOTE: STANDARD COMPONENTS ARE BASED ON PREVIOUSLY DESIGNED CONVEYORS FOR SPECIFIC FLAT TOP CHAINS. SEE THE TECHNICAL SECTION OF THIS CATALOG FOR STANDARD COMPONENTS. MOD TECH RESERVES THE RIGHT TO MODIFY THESE KIT PACKAGES WITHOUT NOTICE.

PLATE KIT - END DRIVE

MAC-4010 & MAC-4013

Application: Mounting System for all End Drives - both drive and idler ends.

Features: Drive plate attached to rail via plate mounting key inside of rail tooling slot. Plate adjusts drive shaft to properly align the chain. Drive shaft bearings are mounted on the drive plate through slots via bearing mounting keys. Bearing height adjustment of 1". See the BOMs below for the correct kit number based on the conveyor rail specified.



Use with Rail MAC-4913, MAC-5159, MAC-5207

DESCRIPTION	MAC-4010	QTY	INCLUDED
A	MAC-1900 DRIVE PLATE RIGHT	1	YES
B	MAC-1915 DRIVE PLATE LEFT	1	YES
C	MAC-7303 RAIL MOUNTING KEY	2	YES
D	MAC-9325 BEARING MOUNTING KEY	4	YES
E	5/16-18 X 1.00" LG. BHSCS	4	NO
F	BEARING MTG. HARDWARE	4	NO

Use with Rail MAC-5095

DESCRIPTION	MAC-4013	QTY	INCLUDED
A	MAC-1912 DRIVE PLATE RIGHT	1	YES
B	MAC-1913 DRIVE PLATE LEFT	1	YES
C	MAC-7303 RAIL MOUNTING KEY	4	YES
D	MAC-9325 BEARING MOUNTING KEY	4	YES
E	5/16-18 X 1.00" LG. BHSCS	8	NO
F	BEARING MTG. HARDWARE	4	NO

Note: All components for one kit will be packaged together. Mod Tech reserves the right to modify this kit package without notice.

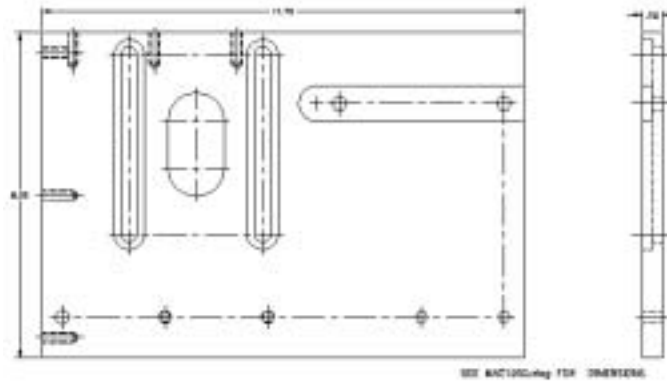
PLATE KIT COMPONENTS - END DRIVE

MAC-1900/1915 Drive/Idler Plate

Application: Mounting plate for all drive and idler components as well as Re-entry Guide. MAC-1900 is right side and MAC-1915 is left side. Used with the following conveyor Rails: MAC-4913, MAC-5159, MAC-5207.

Features: Machined to fit standard applications, tapped holes in top and back allow for covers and bracket mounting, powder coat black paint.

LEFT SIDE SHOWN



MAC-1912/1913 Drive/Idler Plate

Application: Mounting plate for all drive and idler components as well as Re-entry Guide. MAC-1912 is right side and MAC-1913 is left side. Used with the following conveyor Rails: MAC-5095.

Features: Machined to fit standard applications, tapped holes in top and back allow for covers and bracket mounting, powder coat black paint.

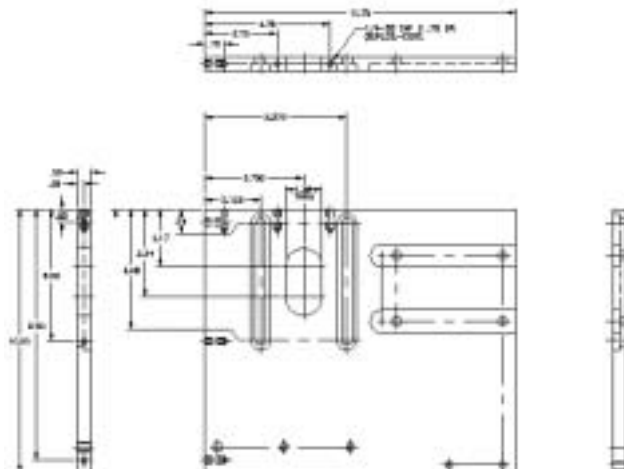


PLATE KIT COMPONENTS - END DRIVE

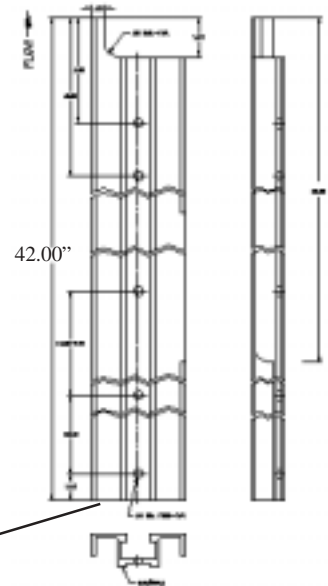
MAC-7751 - 7766

PRE-MACHINED MAC-4913 CONVEYOR

RAIL - DRIVE END - SHOWN

Application: Conveyor rail machined and drilled for mounting to Mod-Tech drive and idler plates.

Features: Material removed to allow mounting to drive plate and to allow catenary kit to guide chain back into the conveyor rail. Fabricated from conveyor rail in standard 42" lengths to allow custom cutting of required lengths.



Note: This end must be cut to length per application and final hole drilled at the 1" dimension.

DRIVE END PART NUMBERS

MOD-TECH RAIL #	RIGHT SIDE	LEFT SIDE
4913	7751	7752
5095	7757	7758
5159	7753	7754
5207	7755	7756

IDLER END PART NUMBERS

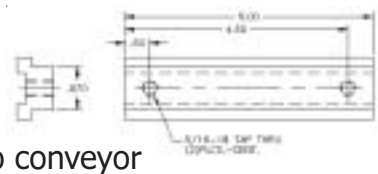
MOD-TECH RAIL #	RIGHT SIDE	LEFT SIDE
4913	7759	7760
5095	7765	7766
5159	7761	7762
5207	7763	7764

MAC-7303 Rail Mounting Key



Application: Attach drive and idler plates to conveyor rails.

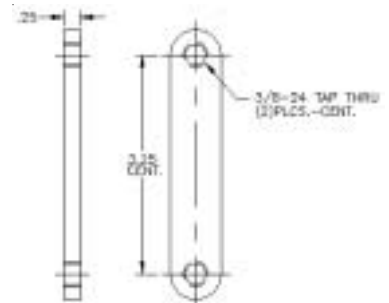
Features: Sized to key into conveyor rail and key into plate mounting slot, extruded aluminum, clear anodized. Extrusion available in 10 foot lengths part # MAC-5303.



MAC-9325 Bearing Mounting Key

Application: Guide fits into slot in drive plate used to allow easy adjustment of the height of the drive and idler axes.

Features: Black Oxide CRS, fits most bearing mounting hole pattern with a 3.25" spacing.



SUPPORT KIT - END DRIVE AND IDLER

MAC-4370 SINGLE LEG MAC-4371 DUAL LEGS

Application: Mounting the structural components at the drive and idler ends of the conveyor.

Features: Standard MAC components used throughout a system packaged in kit form for your convenience.

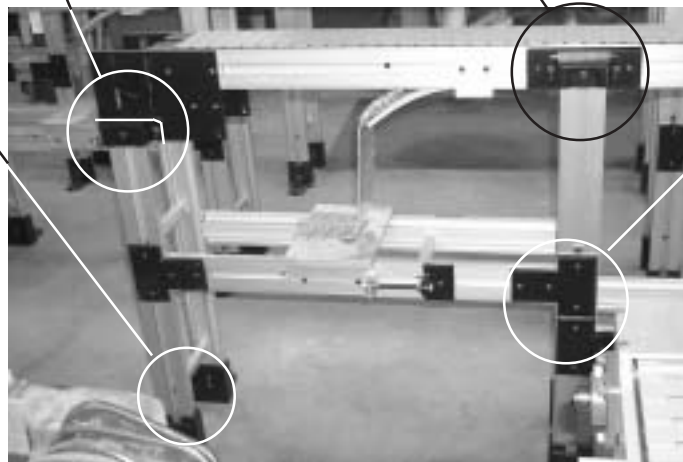
NOTE: All components are shown in the Mounting Systems section of this catalog.

WING SUPPORT ATTACHMENT, SUPPORT CAP

WING KIT

FOOT KIT

"T" BRACKET



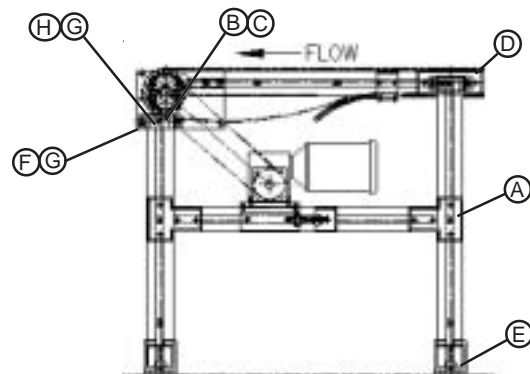
NOTE: The drive/reducer mounting plate is NOT included!

MAC-4370 SINGLE LEG KIT

Description	QTY	INCLUDED
A MAC-2709 "T" BRACKET	4	YES
B MAC-2922 SINGLE WING CAP	2	YES
C MAC-2923 WING CAP COVER	2	YES
D MAC-4110 SINGLE WING KIT	2	YES
E MAC-4120 SINGLE FOOT KIT	4	YES
F 5/16-18 X 1" LG. BHSCS	4	NO
G 5/16 I.D. SAE FLAT WASHER	6	NO
H 5/16-18 X 2.50" LG. HHCS	2	NO

MAC-4371 DUAL LEG KIT

Description	QTY	INCLUDED
A MAC-2709 "T" BRACKET	4	YES
B MAC-2922 SINGLE WING CAP	2	YES
C MAC-2924 WING CAP COVER	2	YES
D MAC-4130 DUAL WING KIT	2	YES
E MAC-4140 DUAL FOOT KIT	4	YES
F 5/16-18 X 1" LG. BHSCS	4	NO
G 5/16 I.D. SAE FLAT WASHER	6	NO
H 5/16-18 X 3.75" LG. HHCS	2	NO



Note: All components for one kit will be packaged together. Mod-Tech reserves the right to modify this kit package without notice.

IDLER RE-ENTRY KIT - End Drive

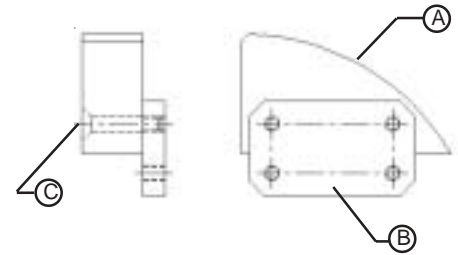
MAC-44__

(Last 2 numbers are from last 2 numbers from the mounting plate choice below)

Idler Re-Entry Kit Assembly

Application: Guides chain back into conveyor rail after rounding the idler.

Features: Nylon shoe with counter sunk mounting holes on both sides for right and left applications. Plate part# varies based on chain dimensions. Available in kit form only.



	DESCRIPTION	QTY	INCLUDED
A	IDLER RE-ENTRY SHOE	2	YES
B	SHOE MOUNTING PLATE	2	YES
C	1/4-20 X 1 3/16" LG. FHSCS	4	NO

MAC-3015

Idler Re-Entry Shoe

Application: Guides chain back into conveyor rail after rounding the idler.

Features: UHMW with counter sunk mounting holes on both sides for right and left components.



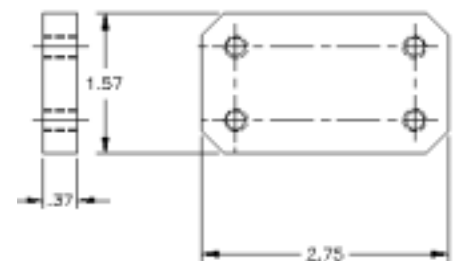
MAC-19__

(Last 2 numbers are from the mounting plate choice below)

Shoe Mounting Plate

Application: Interface between the idler plates and the re-entry shoe.

Features: Sized for specific chains based on chain manufacturers guidelines. Part # 1901 shown. See part # list below. If chain used is not shown please contact Mod-Tech.

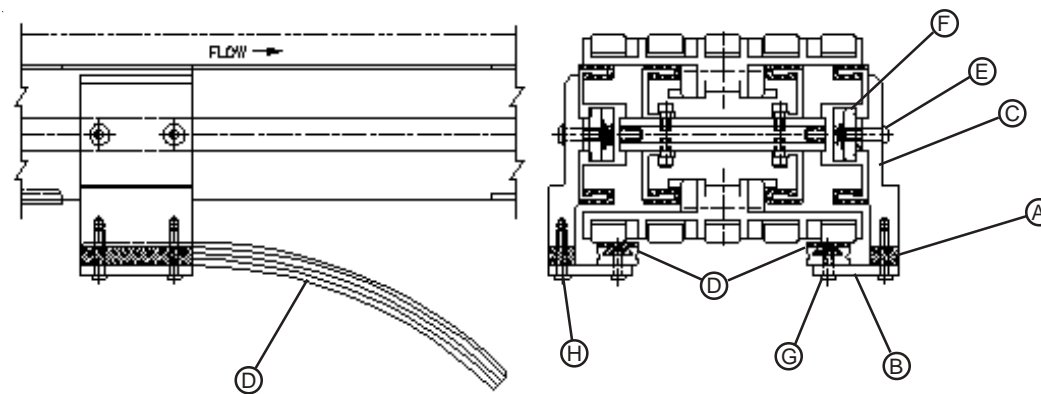
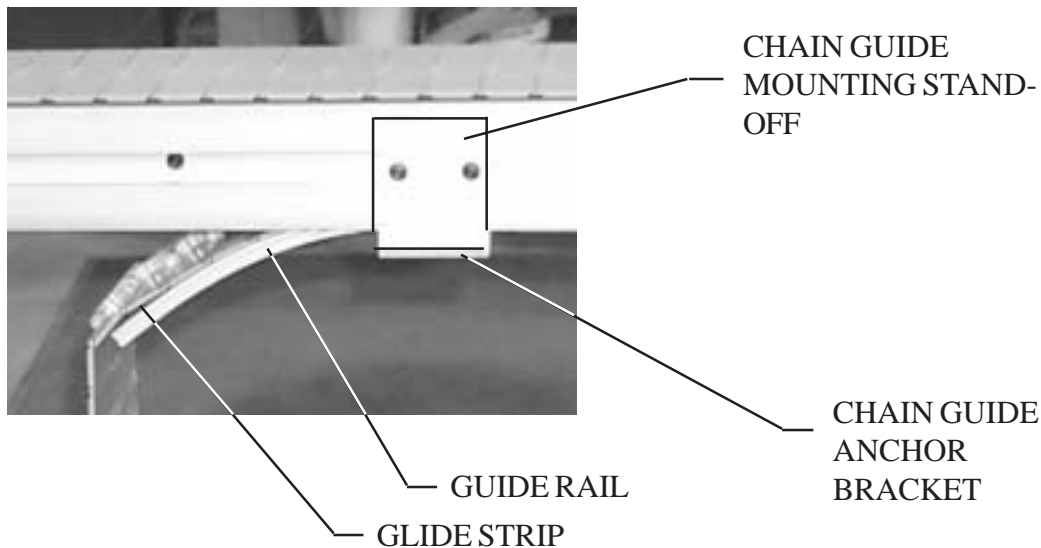


Chain Model #	Mod-tech Part #
LBP882T	1901
LBP883T	1901
1873T	1902
880T	1903
881T	1903
1843T	1903
All Non-Tab Chains	1904
882T	1905

CATENARY RE-ENTRY KIT

MAC-42__

There are 5 variables when selecting the correct Catenary Re-Entry kit all of which are based on chain selection: 1) Chain Guide Mtg. Standoff - Height, 2) Chain Guide Anchor Bracket - Size, Shape, Hole Pattern, 3) Anchor Bracket Spacer - May not be Required, 4) Quantity of each component required. The last 2 numbers of the kit number selected based on the chart included at the end of this section. Available in kit form only.



Description	QTY	INCLUDED
A MAC-1075 ANCHOR BRACKET SPACER	2	YES
B MAC-1225 CHAIN GUIDE ANCHOR BRKT	2	YES
C MAC-7300 CHAIN GUIDE MTG. STANDOFF	2	YES
D MAC-7745 CATENARY SHOE	2	YES
E 5/16 X 1.00" LG. BHSCS	4	NO
F 5/16-18 SPRING NUT	4	NO
G 1/4-20 X .62" LG. BHSCS	4	NO
H 1/4-20 X 1.25" LG. BHSCS	4	NO

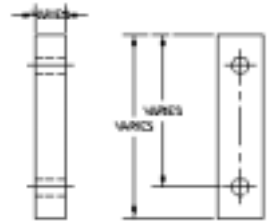
Note: Items A, B, and C are sample part numbers. The kit number must be selected from the list included in the section. All components for one kit will be packaged together. Mod Tech reserves the right to modify this kit package without notice.

CATENARY RE-ENTRY COMPONENTS

MAC-1075(SHOWN) ANCHOR BRACKET SPACER

Application: Provides additional spacing between standoff and anchor bracket.

Features: Thickness and mounting holes vary based on chain model selected.

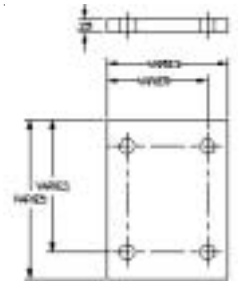


See the following chart for correct selections based on chain model number.

MAC-1225(SHOWN) CHAIN GUIDE ANCHOR BRACKET

Application: Attaches the guide rail to the anchor bracket.

Features: Mounting hole number and location vary based on chain model selected.

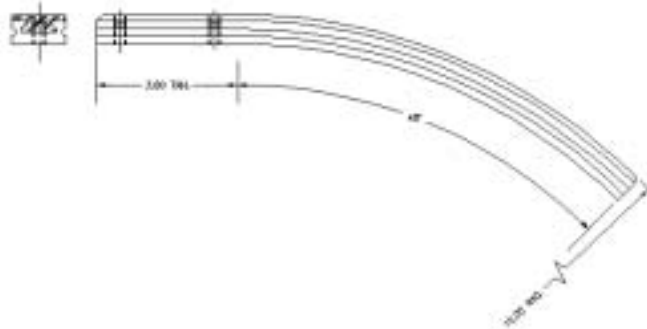


See the following chart for correct selections based on chain model number.

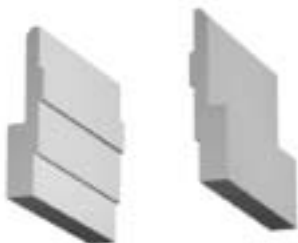
MAC-7745 CATENARY SHOE

Application: Lead-In for the re-entry of the chain into the conveyor rail.

Features: Standard extrusions formed at precise dimensions based on chain manufacturers recommendations.

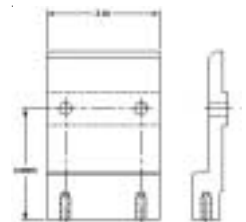


MAC-7300(SHOWN) CHAIN GUIDE MTG. STANDOFF



Application: Attaches the Catenary Re-Entry assembly to the conveyor rail.

Features: Keyed to fit rail tooling slot, drilled and tapped to mount the anchor bracket.



See the following chart for correct selections based on chain model number.

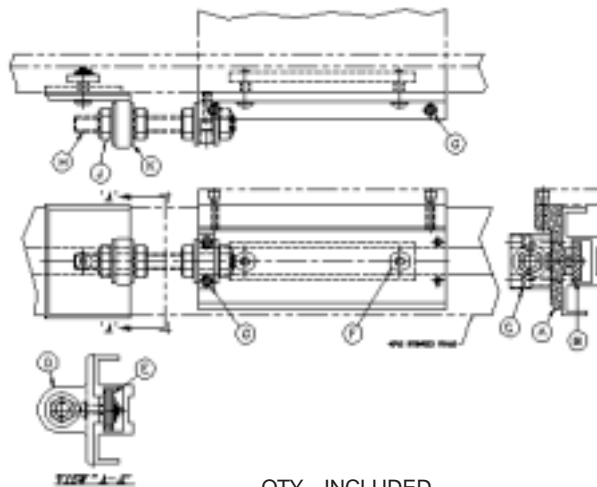
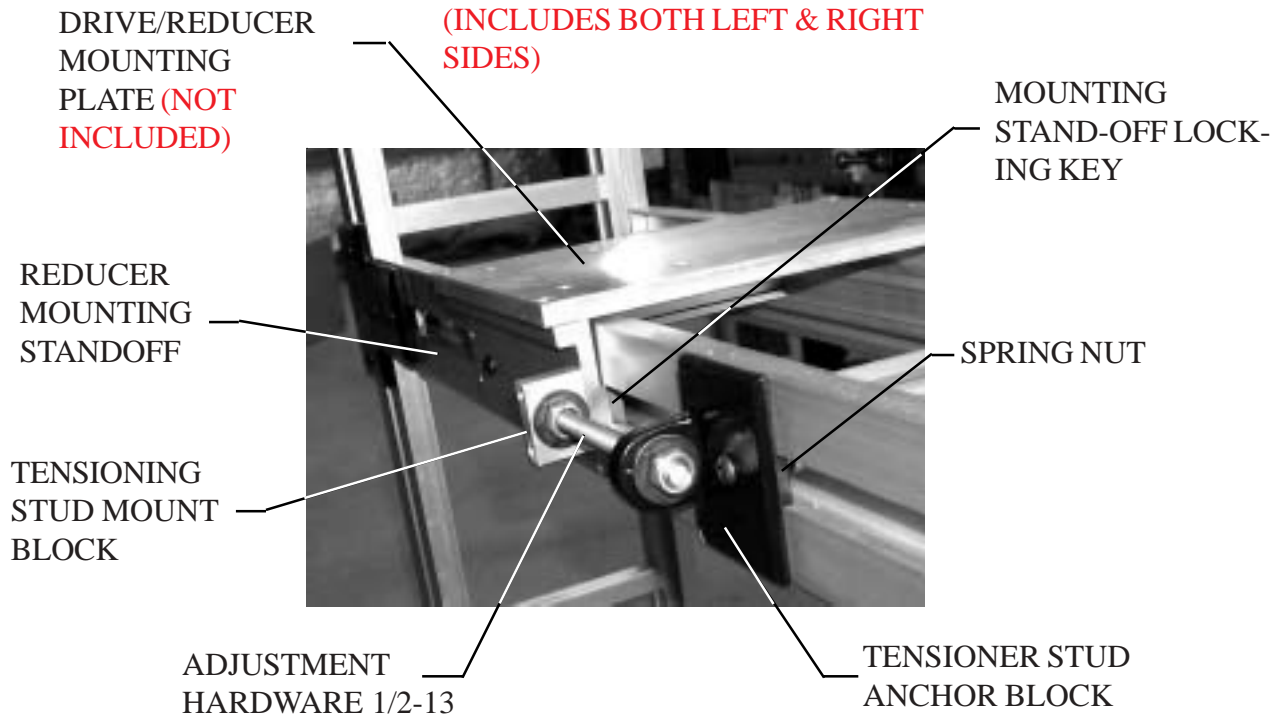
CATENARY RE-ENTRY KIT NUMBERS

CHAIN (REXNORD #)	CATENARY	CHAIN GUIDE				ANCHOR	
	RE-ENTRY KIT	CATENARY	MNTG	ANCHOR	BRKT	BRKT	
	NUMBER	SHOE	STANDOFF	BRKT	SPACER		
	PART#	PART # QTY	PART # QTY	PART # QTY	PART #		
LF820-K-4.00"	MAC-4220	7745 2	7206 2	1275 2	N/A		
LF820-K-4.50"	MAC-4220	7745 2	7206 2	1275 2	N/A		
LF820-K-6.00"	MAC-4220	7745 2	7206 2	1275 2	N/A		
LF820-K-7.50"	MAC-4220	7745 2	7206 2	1275 2	N/A		
LF821-K-10.00"	MAC-4221	7745 2	7206 2	1325 2	N/A		
LF821-K-10.00" QL	MAC-4221	7745 2	7206 2	1325 2	N/A		
LF821-K-12.00"	MAC-4221	7745 2	7206 2	1325 2	N/A		
LF821-K-7.50"	MAC-4221	7745 2	7206 2	1325 2	N/A		
LF831-K-4.50"	MAC-4221	7745 2	7206 2	1325 2	N/A		
LF831-K-7.50"	MAC-4221	7745 2	7206 2	1325 2	N/A		
LF820-K-3.25"	MAC-4222	7745 1	7206 2	1525 1	N/A		
LF831-K-3.25"	MAC-4222	7745 1	7206 2	1525 1	N/A		
LF1843T-K-1.25"	MAC-4223	7745 1	7266 2	1372 1	N/A		
LF1843T-K-1.37"	MAC-4223	7745 1	7266 2	1372 1	N/A		
LF1843T-K-2.00"	MAC-4223	7745 1	7266 2	1372 1	N/A		
LF880T-K-3.25"	MAC-4224	7745 2	7269 2	1188 2	N/A		
LF880T-K-4.50"	MAC-4224	7745 2	7269 2	1188 2	N/A		
S881T-K-3.25"	MAC-4224	7745 2	7269 2	1188 2	N/A		
S881T-K-4.50"	MAC-4224	7745 2	7269 2	1188 2	N/A		
S881T-K-4.50"	MAC-4224	7745 2	7269 2	1188 2	N/A		
S881T-K-7.50"	MAC-4224	7745 2	7269 2	1188 2	N/A		
LF882T-K-7.50"	MAC-4225	7745 2	7291 2	1188 2	N/A		
LF882T-K-7.50"	MAC-4225	7745 2	7291 2	1188 2	N/A		
LF1873T-K10.00"	MAC-4226	7745 2	7300 2	1188 2	N/A		
LF1873T-K-12.00"	MAC-4226	7745 2	7300 2	1188 2	N/A		
LF1873T-K-12.00"	MAC-4226	7745 2	7300 2	1188 2	N/A		
LF1873T-K-3.00"	MAC-4226	7745 2	7300 2	1188 2	N/A		
LF1873T-K-3.25"	MAC-4226	7745 2	7300 2	1188 2	N/A		
LF1873T-K-4.50"	MAC-4226	7745 2	7300 2	1188 2	N/A		
LF1873T-K-6.00"	MAC-4226	7745 2	7300 2	1188 2	N/A		
LF1873T-K-7.50"	MAC-4226	7745 2	7300 2	1188 2	N/A		
LF1873T-K-7.50"	MAC-4226	7745 2	7300 2	1188 2	N/A		
LBP882T-K-3.75	MAC-4227	7745 2	7300 2	1225 2	1075		
LBP883T-K-7.50"	MAC-4227	7745 2	7300 2	1225 2	1075		
LF1873T-K-2.25" DL	MAC-4228	7745 2	7300 2	1281 2	N/A		
LF1873T-K-2.25"	MAC-4229	7745 1	7300 2	1488 1	N/A		

You Order a Kit Number based on the chain you are using.

GRT-8 MOTOR/REDUCER TENSIONER KIT

MAC-4210 Available in kit form only.



DESCRIPTION	QTY	INCLUDED
A MAC-7268 REDUCER MNTG. STAND-OFF	2	YES
B MAC-9101 MNTG. STAND-OFF LOCKING KEY	2	YES
C MAC-1920 TENSIONING STUD MOUNT BLOCK	2	YES
D MAC-2754 TENSIONING STUD ANCHOR BLOCK	2	YES
E 5/16-18 SPRING NUT	2	YES
F 5/16-18 X 1.00 LG. BHSCS	6	YES
G 1/4-20 X .75 LG. SHCS	4	YES
H 1/2-13 ALL THREAD X 6.00 LG.	2	YES
J 1/2-13 JAM NUT	8	YES
K 1/2 I.D. SAE FLAT WASHER	8	YES

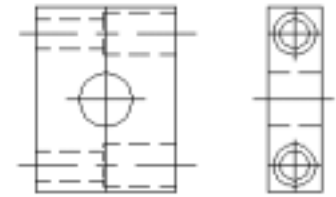
Note: Individual components can not be purchased separately. All components for one kit will be packaged together. Mod Tech reserves the right to modify this kit package without notice.

TENSIONER COMPONENTS

MAC-1920 TENSIONING STUD MNTG BLOCK

Application: Interface between ALL-THREAD adjusted and the slidable Stand-off bracket.

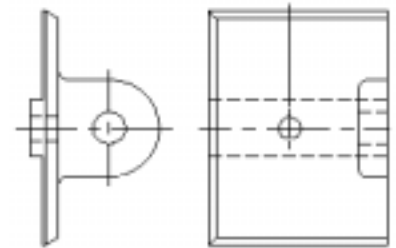
Features: Pre-assembled to the stand-off bracket.



MAC-2754 TENSIONING STUD ANCHOR BLOCK

Application: The fixed interface between ALL-THREAD adjuster and the stringer rail.

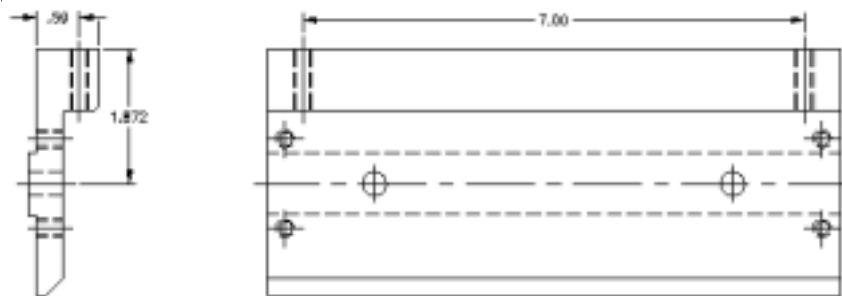
Features: Keyed to fit stringer rail, anchors with 5/16-18 standard Unistrut nut.



MAC-7268 REDUCER MNTG. STAND-OFF

Application: The adjustable interface between ALL-THREAD adjuster and the stringer rail.

Features: Keyed to fit stringer rail, anchors with MAC-9101 Mounting Stand-off Locking Key.



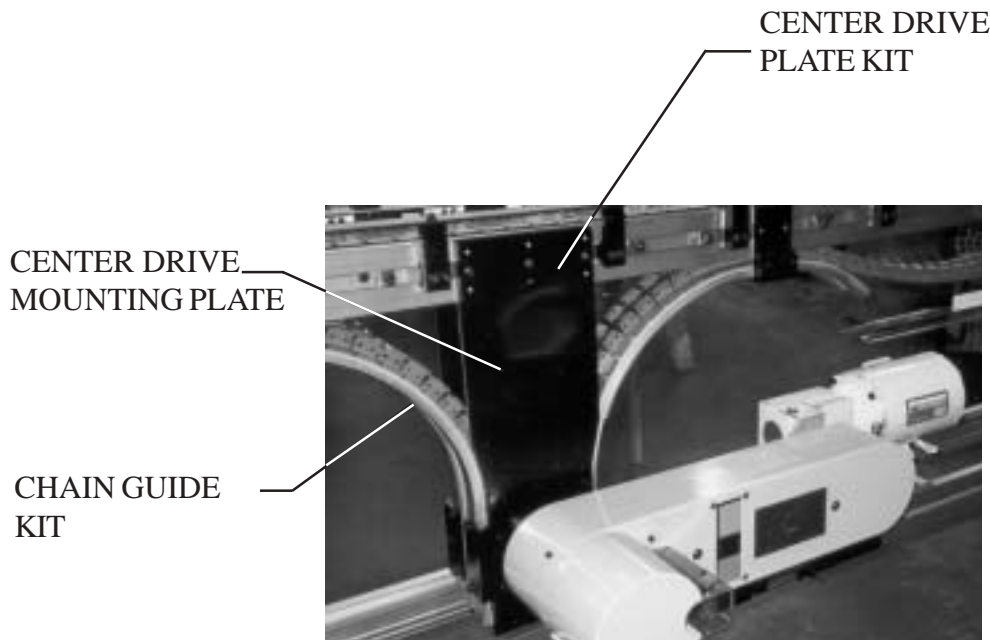
MAC-9101 MNTG. STAND-OFF LOCKING KEY

Application: The anchoring device for the MAC-7268 Reducer Mntg. Stand-off.

Features: Drilled and tapped to fit MAC-7268 and allows it to slip for adjusting the drive/reducer mounting plate.



CENTER DRIVE KIT DESCRIPTIONS



A - MAC-4020 PLATE KITS - Includes components designed to mount the center drive sprocket shaft bearings to the conveyor.

B - MAC-4450/4451 CHAIN GUIDE KIT - Includes components to guide the chain into and back out of the drive sprocket.

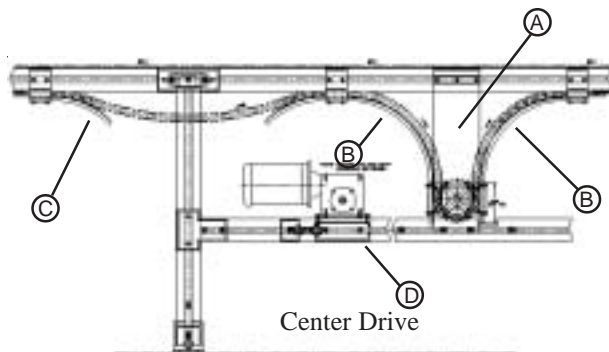
C - MAC-42__ CATENARY RE-ENTRY KIT - These kits are required for the idler ends of the conveyor. See Drive section of this catalog for descriptions.

D - MAC-4210 GEAR REDUCER TENSIONER KIT - These kits are required for the idler ends of the conveyor. See Drive section of this catalog for descriptions.

E - SUPPORT KITS - Includes structural components for mounting the legs and stringers around the drive and idler components.

F - MAC-4010 Plate Kits - These kits are required for the idler ends of the conveyor. See Drive section of this catalog for descriptions.

G - MAC-42__ IDLER RE-ENTRY KIT - These kits are required for the idler ends of the conveyor. See Drive section of this catalog for descriptions.



Ⓕ Ⓖ These items are not shown.

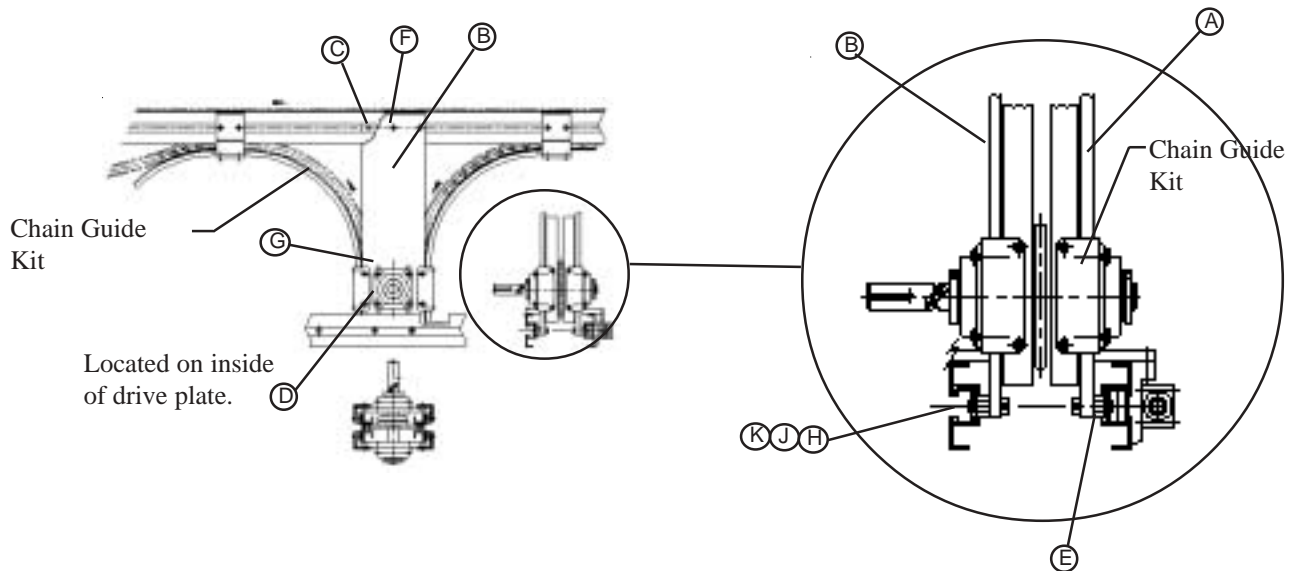
NOTE: STANDARD COMPONENTS ARE BASED ON PREVIOUSLY DESIGNED CONVEYORS FOR SPECIFIC FLAT TOP CHAINS. SEE THE TECHNICAL SECTION OF THIS CATALOG FOR STANDARD COMPONENTS.

PLATE KIT - CENTER DRIVE

MAC-4020 PLATE KIT

Application: Mounting System for all CenterDrive conveyors.

Features: Drive plate attached to conveyor rail via plate mounting key inside of rail tooling slot and is bolted to support stringer for additional support. Drive shaft bearings are mounted on the drive plate through slots via bearing mounting keys. Bearing height adjustment of 1". Plate kit MAC-4020 utilizes a bearing key spacing of 3.25". Available in kit form only.



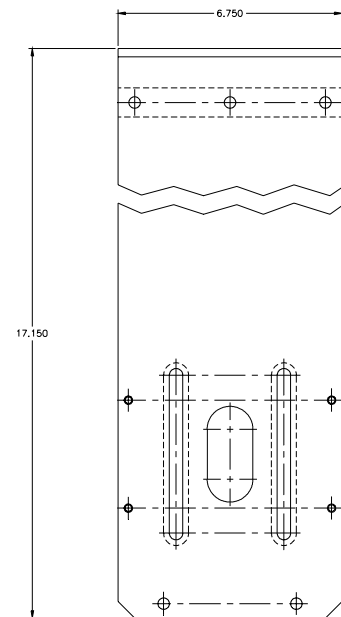
DESCRIPTION	MAC-4020	QTY	INCLUDED
A	MAC-1910 DRIVE PLATE RIGHT	1	YES
B	MAC-1910 DRIVE PLATE LEFT	1	YES
C	MAC-7304 RAIL MOUNTING KEY	2	YES
D	MAC-9325 BEARING MOUNTING KEY	4	YES
E	MAC-7401 1/2 "H" BEAM	4	YES
F	5/16-18 X 1.00" LG. BHSCS	6	NO
G	BEARING MTG. HARDWARE	8	NO
H	5/16-18 X 1.63" LG.	4	NO
J	5/16 I.D. SAE FLAT WASHER	4	NO
K	5/16-18 SAE HEX NUT	4	NO

Note: All components for one kit will be packaged together. Mod Tech reserves the right to modify this kit package without notice.

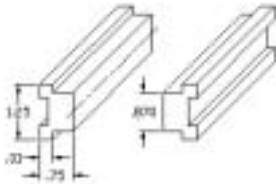
PLATE KIT COMPONENTS - CENTER DRIVE

MAC-1910 Drive Plate

Application: Mounting plate for all center drives
Features: Machined to fit standard applications, mounts to conveyor via Rail Mounting Key, bearing mounting slots allow for 1" adjustment, powder coat black paint. Note: MAC-1910 fits both right and left side.



MAC-7304 Rail Mounting Key



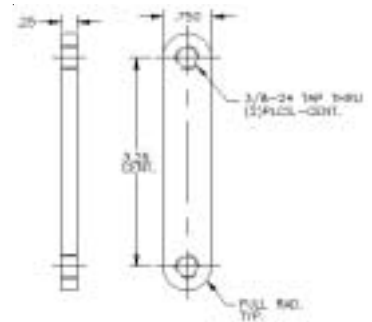
Application: Attach center drive plates to conveyor rails.

Features: Sized to key into conveyor rail and key into plate mounting slot, extruded aluminum, clear anodized. Extrusion available in 10 foot lengths part # MAC-5303.



MAC-9325 Bearing Mounting Key

Application: Guide fits into slot in drive plate used to allow easy adjustment of the height of the drive axle.
Features: Black Oxide CRS, fits most bearing mounting hole pattern with a 3.25" spacing.

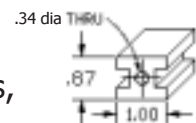


MAC-7401 "H" Beam Spacer



Application: Interface between Center Drive Plate and Stringer Rail, stabilizes drive plate.

Features: Precision Aluminum extrusion w/ through hole drilled .34 dia, fits conveyor rail slots, Clear Anodized.

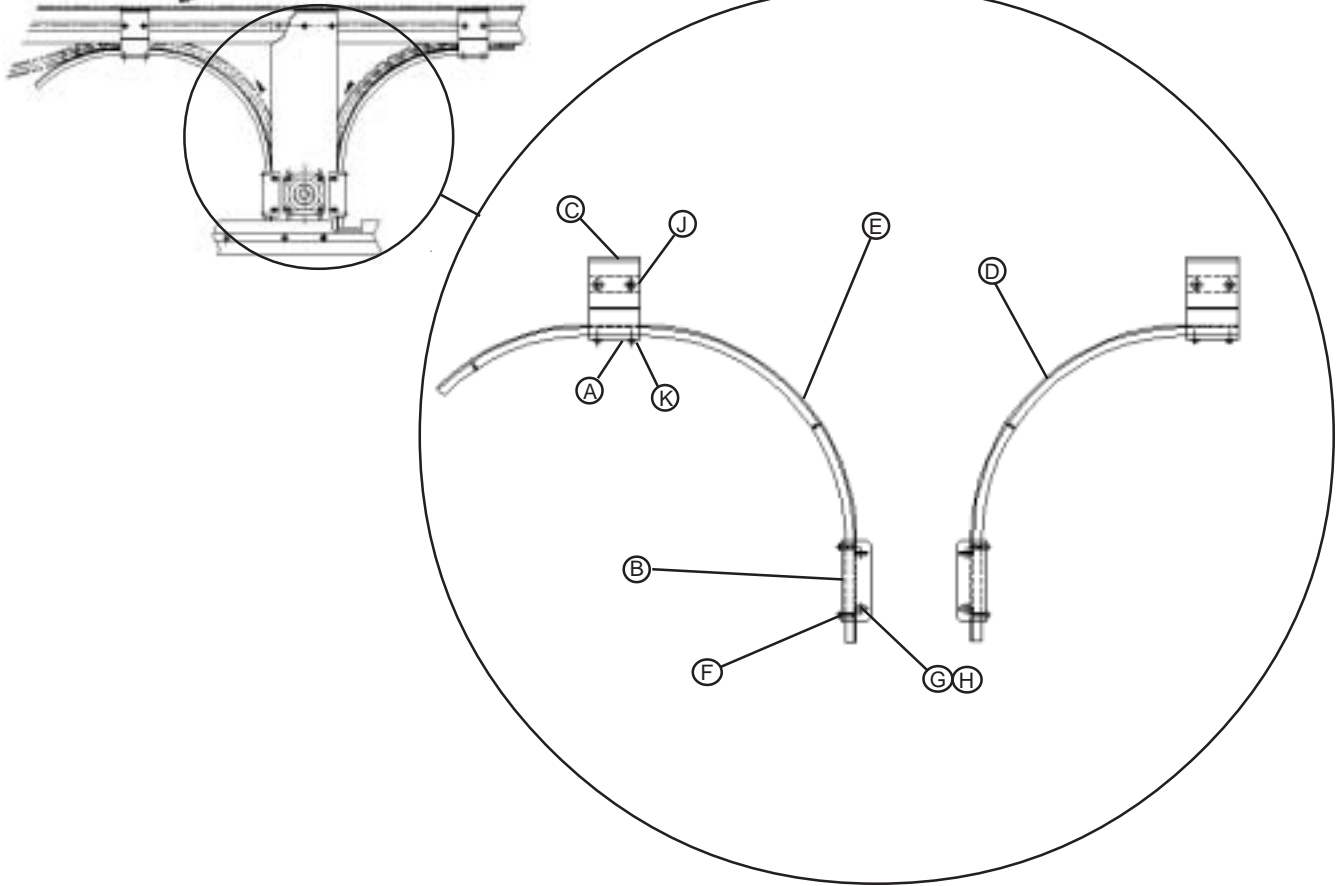


CHAIN GUIDE KIT - CENTER DRIVE

MAC-4450/4451 Chain Guide Kit

Application: Guides chain into and out of drive sprocket as well as chain slack support. MAC-4450 for use with LF1873T-K-3.25 or equivalent and MAC-4451 for use with LF831-K-7.50 or equivalent.

Features: Components mount to conveyor and to drive plate to insure correct spacings as recommended by chain manufacturers. Available in kit form only.



DESCRIPTION	MAC-4450	QTY	INCLUDED
A	MAC-1188 CHAIN GUIDE ANCR BRKT	4	YES
B	MAC-1922 CHAIN GUIDE ANCR PLATE	4	YES
C	MAC-7300 CH. GD. MTG STANDOFF	4	YES
D	MAC-7743 ENTRY SHOE	2	YES
E	MAC-7744 EXIT SHOE	2	YES
F	1/4-20 X .62" LG. BHSCS	8	NO
G	1/4-20 X .75" LG. BHSCS	8	NO
H	1/4 I.D. SAE FLAT WASHER	8	NO
J	5/16-18 X 1.00" LG. BHSCS	8	NO
K	1/4-20 X 1.00" LG. BHSCS	8	NO

DESCRIPTION	MAC-4451	QTY	INCLUDED
A	MAC-1325 CHAIN GUIDE ANCR BRKT	4	YES
B	MAC-1921 CHAIN GUIDE ANCR PLATE	4	YES
C	MAC-7206 CH. GD. MTG STANDOFF	4	YES
D	MAC-7743 ENTRY SHOE	2	YES
E	MAC-7744 EXIT SHOE	2	YES
F	1/4-20 X .62" LG. BHSCS	8	NO
G	1/4-20 X .75" LG. BHSCS	8	NO
H	1/4 I.D. SAE FLAT WASHER	8	NO
J	5/16-18 X 1.00" LG. BHSCS	8	NO
K	1/4-20 X 1.00" LG. BHSCS	8	NO

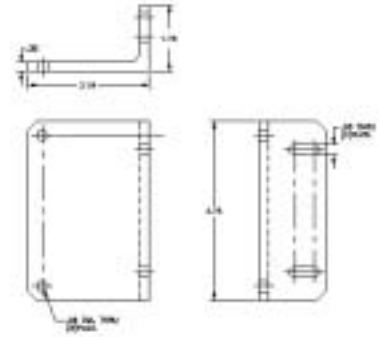
Note: All components for one kit will be packaged together. Mod Tech reserves the right to modify this kit package without notice.

CHAIN GUIDE COMPONENTS - CENTER DRIVE

MAC-1921 Chain Guide Anchor Plate

Application: Mounting plate for all drive and idler components as well as Re-entry Guide. Used with LF831-K7.50 Rexnord or equivalent.

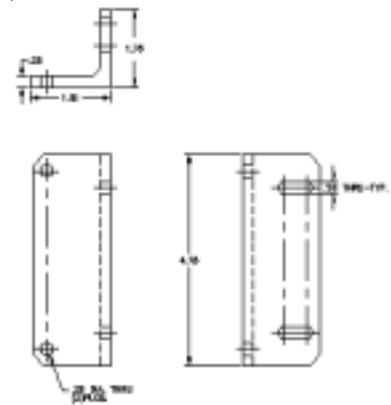
Features: Machined to fit standard applications, tapped holes in top and back allow for covers and bracket mounting, powder coat black paint.



MAC-1922 Chain Guide Anchor Plate

Application: Mounting plate for all drive and idler components as well as Re-entry Guide. Used with LF1873T-K3.00 Rexnord or equivalent.

Features: Machined to fit standard applications, tapped holes in top and back allow for covers and bracket mounting, powder coat black paint.

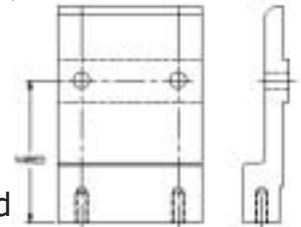


MAC-7300/7206 CHAIN GUIDE MTG. STANDOFF



Application: Attaches the Catenary Re-Entry assembly to the conveyor rail.

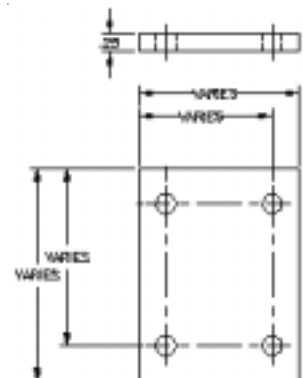
Features: Keyed to fit rail tooling slot, drilled and tapped to mount the anchor bracket. Dimensions vary based on chain model selected.



MAC-1188/1325 CHAIN GUIDE ANCHOR BRACKET

Application: Attaches the guide rail to the anchor bracket.

Features: Mounting hole number and location vary based on chain model selected.



WRAP DRIVE KIT DESCRIPTIONS



Wrap drives can be configured in two basic styles: In-line drive with offset transfer, or Offset drive with in-line transfer. The offset drive utilizes standard end drive components while the in-line drive may require specially designed drive components. Contact Mod Tech for a review of your application.

A - PLATE KITS - Includes components designed to mount drive and idler shaft bearings to the conveyor.

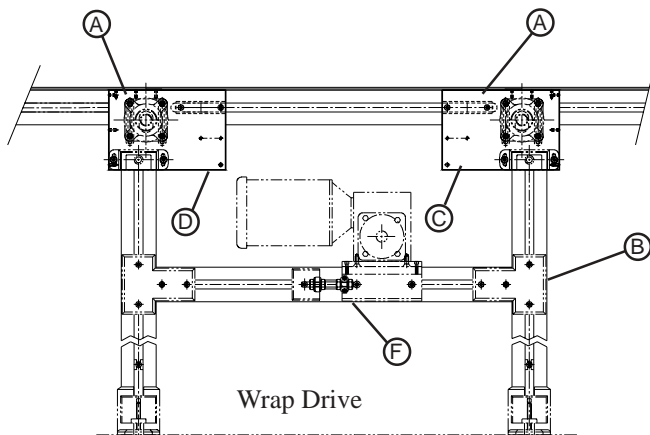
B - SUPPORT KITS - Includes structural components for mounting the legs and stringers around the drive and idler components.

C - IDLER RE-ENTRY KIT - Includes the components to guide the chain back into the conveyor rails after rounding the idler sprocket.

D - CATENARY RE-ENTRY KIT - Includes the components that guide the chain back into the conveyor rail after the chain rounds the drive sprocket.

E - CENTER DRIVE CHAIN GUIDE KIT - Includes components to guide the chain into and back out of the drive sprocket.

F - GEAR REDUCER TENSIONER KIT - Includes components to tension the drive chain via adjusting the drive plate (not included).



NOTE: STANDARD COMPONENTS ARE BASED ON PREVIOUSLY DESIGNED CONVEYORS FOR SPECIFIC FLAT TOP CHAINS. SEE THE TECHNICAL SECTION OF THIS CATALOG FOR STANDARD COMPONENTS.