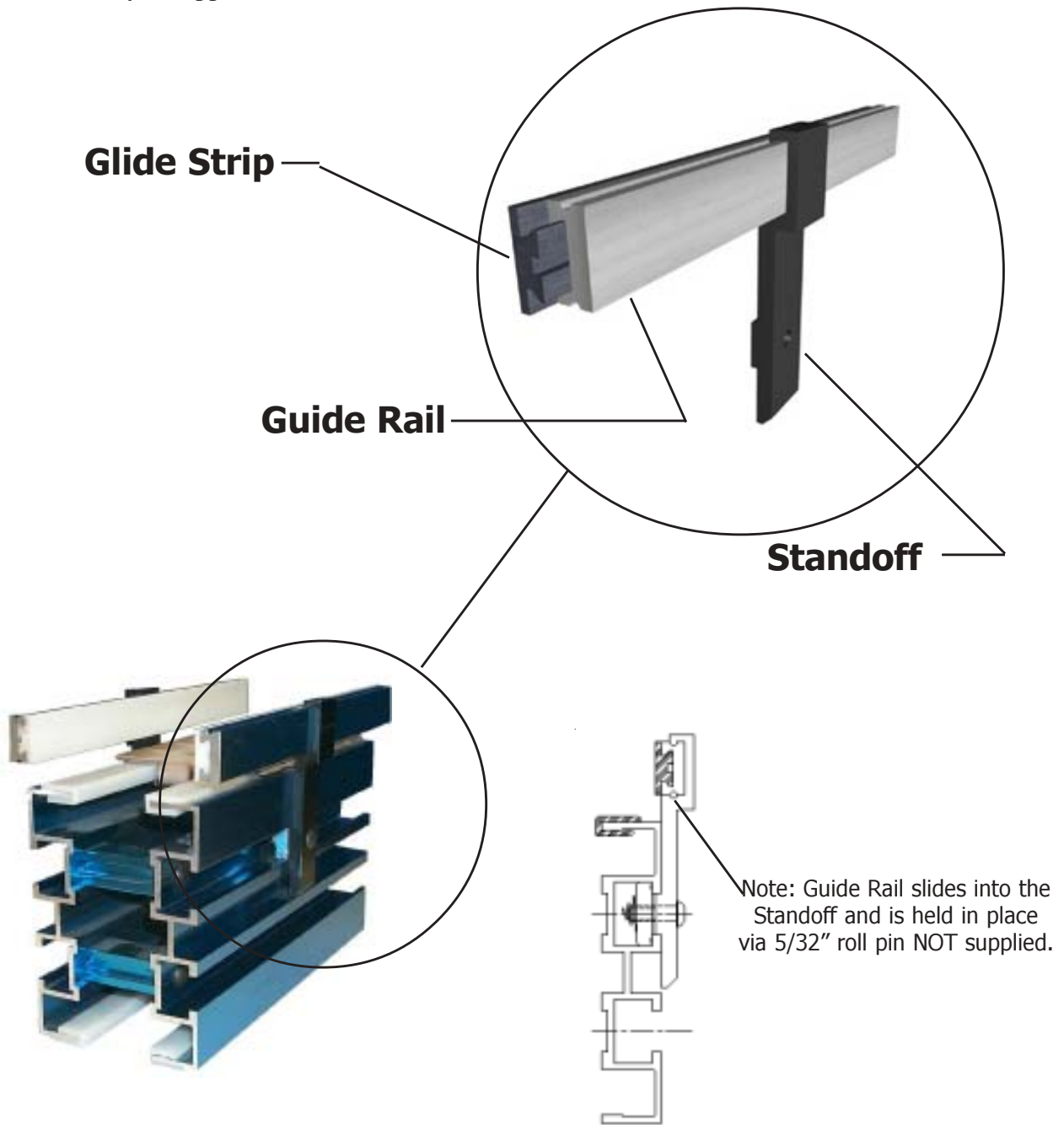


SIDE GUIDE ASSEMBLY

Mod Tech Side Guides are designed to fit most applications. We offer seven different fixed standoffs and an adjustable standoff. Two types of wear strips (Glide Strip) are available that will fit any of the standoffs. Please see the following pages to see which standoff is right for your application.



TYPICAL ASSEMBLY

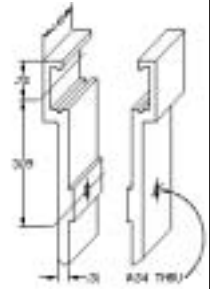
SIDE GUIDE COMPONENTS

MAC-4914

Fixed Standoff -0.50



Application: Guide Rail or Sensor mounting bracket.
Features: Keyed to fit rail tooling slot. **Reduces** conveyor opening 1/2" when using MAC-4743 Guide Rail and Mac Guide Strips on both sides. Standard 1 1/8" wide, Clear Anodized. Special Orders: Extruded Lengths, Colors, and Annealed.

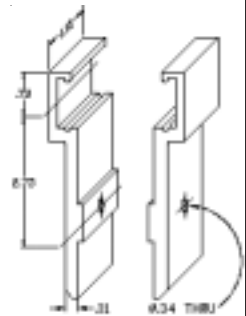


MAC-5127

Fixed Standoff-0.50



Application: Guide Rail or Sensor mounting bracket with lower mounting requirements.
Features: Keyed to fit rail tooling slot. **Reduces** conveyor opening 1/2" when using MAC-4743 Guide Rail and Mac Guide Strips on both sides. Standard 1 1/8" wide, Clear Anodized. Special Orders: Extruded Lengths, Colors, and Annealed.

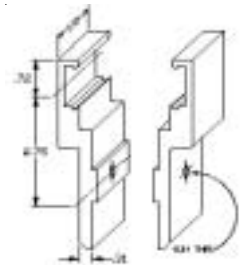


MAC-5175

Fixed Standoff+0.25



Application: Guide Rail or Sensor mounting bracket.
Features: Keyed to fit rail tooling slot. **Increases** conveyor opening 1/4" when using MAC-4743 Guide Rail and Mac Guide Strips on both sides. Standard 1 1/8" wide, Clear Anodized. Special Orders: Extruded Lengths, Colors, and Annealed.

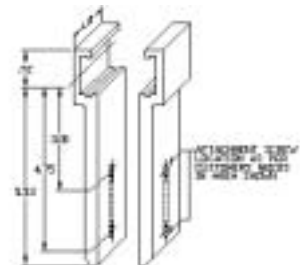


MAC-5188

Vertical Adjustable Standoff-0.50



Application: Guide Rail or Sensor mounting bracket.
Features: Non-Keyed, **Reduces** conveyor opening 1/2" when using MAC-4743 Guide Rail and Mac Guide Strips on both sides. Standard 1 1/8" wide, Clear Anodized. Special Orders: Extruded Lengths, Colors, and Annealed.



SIDE GUIDE COMPONENTS



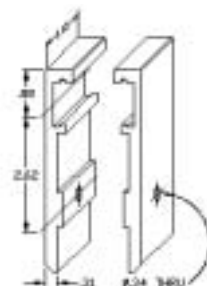
MAC-5402 Fixed Standoff+2.88

Application: Guide Rail or Sensor mounting bracket.
Features: Keyed to fit rail tooling slot. **Increases** conveyor opening 2.88" when using MAC-4743 Guide Rail and Mac Guide Strips on both sides. Standard 1 1/8" wide, Clear Anodized. Special Orders: Extruded Lengths, Colors, and Annealed.



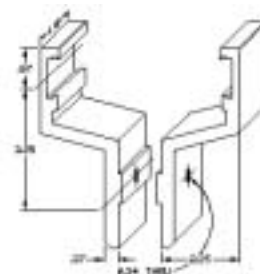
MAC-5738 Fixed Standoff-1.00

Application: Guide Rail or Sensor mounting bracket.
Features: Keyed to fit rail tooling slot. **Reduces** conveyor opening 1" when using MAC-4743 Guide Rail and Mac Guide Strips on both sides. Standard 1 1/8" wide, Clear Anodized. Special Orders: Extruded Lengths, Colors, and Annealed.



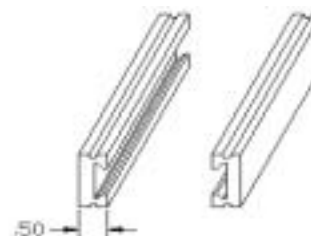
MAC-6081 Fixed Standoff+5.75

Application: Guide Rail or Sensor mounting bracket.
Features: Keyed to fit rail tooling slot. **Increases** conveyor opening 5 3/4" when using MAC-4743 Guide Rail and Mac Guide Strips on both sides. Standard 1 1/8" wide, Clear Anodized. Special Orders: Extruded Lengths, Colors, and Annealed.



MAC-4743 Guide Rail

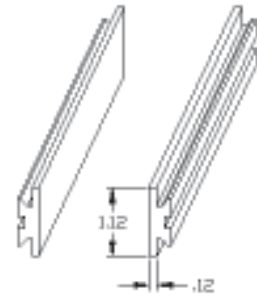
Application: Used to mount Glide Strip.
Features: Keyed to fit all standoff tooling slot, Don't tail keyed for all Glide Strips. Standard 10' Lengths, Clear Anodized. Special Orders: Extruded Lengths, Colors, and Annealed.



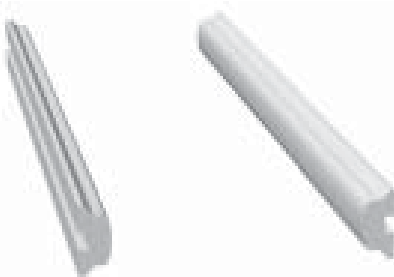


MAC-3004 Glide Strip - Flat

Application: Product Wear Strip.
Features: UHMW with molybdenum, Dove-tail Lock, 1 1/8" contact surface, Standard 20' Lengths.

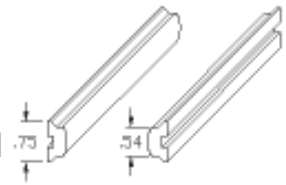


Other materials available
with special order.



MAC-3002 Glide Strip - Round

Application: Product Wear Strip.
Features: UHMW, Dovetail Lock, Rounded contact surface, Standard 10' Lengths.



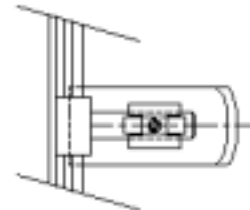
Other materials available
with special order.

SIDE GUIDE COMPONENTS

MAC-4310 Adjustable Standoff Kit

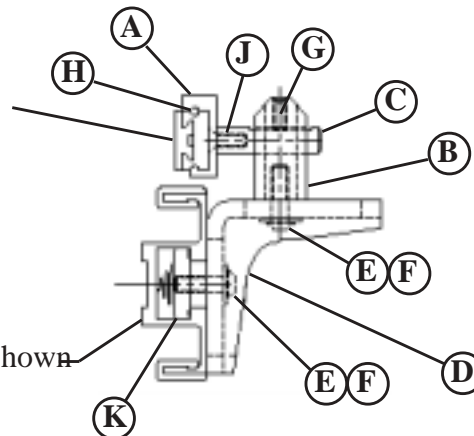
Application: Variable sized product or pallet guides.

Features: Attaches to the conveyor rail tooling slot via a spring nut, fits standard MAC-4743 Guide Rail, allows 1.35" vertical adjustment, 2.87" adjustment horizontal adjustment. Available in kit form only.



Guide Rail and Glide Strip shown for clarity.

Conveyor rail shown for clarity.



DESCRIPTION	QTY	INCLUDED
A GUIDE RAIL MTG BRKT MAC-7100	1	YES
B GUIDE RAIL MTG POST RISER MAC-7110	1	YES
C GUIDE RAIL MTG POST MAC-1050	1	YES
D GUIDE RAIL BRACKET MAC-8510	1	YES
E 5/16-18 X 1" LG. BHSCS	2	YES
F 5/16 FLAT WASHER	2	YES
G 5/16-18 X .5" LG. SHOPSS	1	YES
H .156 DIA. 1" LG ROLL PIN	1	YES
J 1/4-20 X .5" LG. FHSCS	1	YES
K 5/16-18 SPRING NUT	1	YES

Note: Individual components may be purchased separately. All components for one kit will be packaged together. Mod Tech reserves the right to modify this kit package without notice.

